

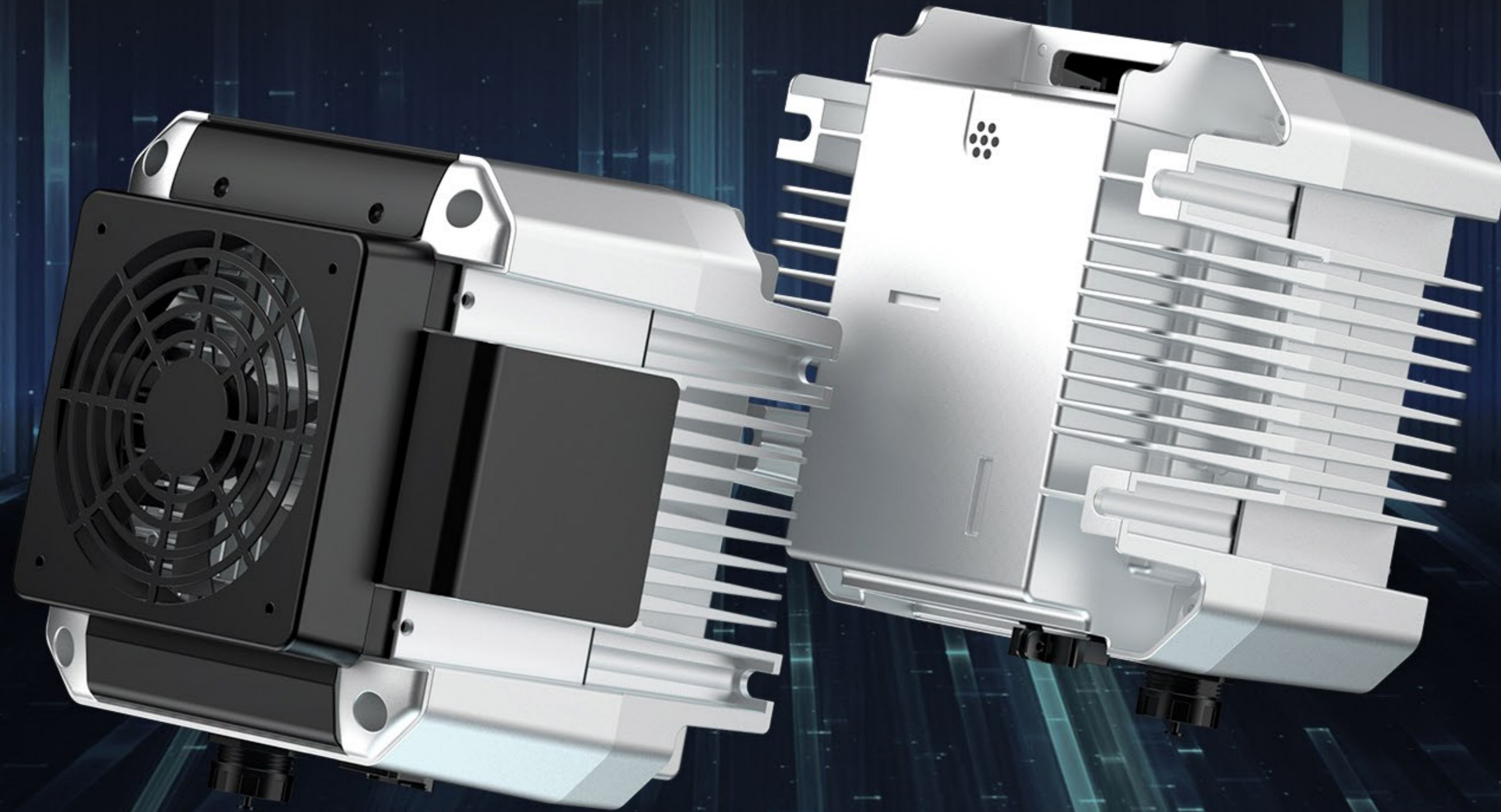
# / EQ Family Charger /

EQ Family Charger



## Industry-Leading High-Efficiency Sealed High-Frequency Battery Charger

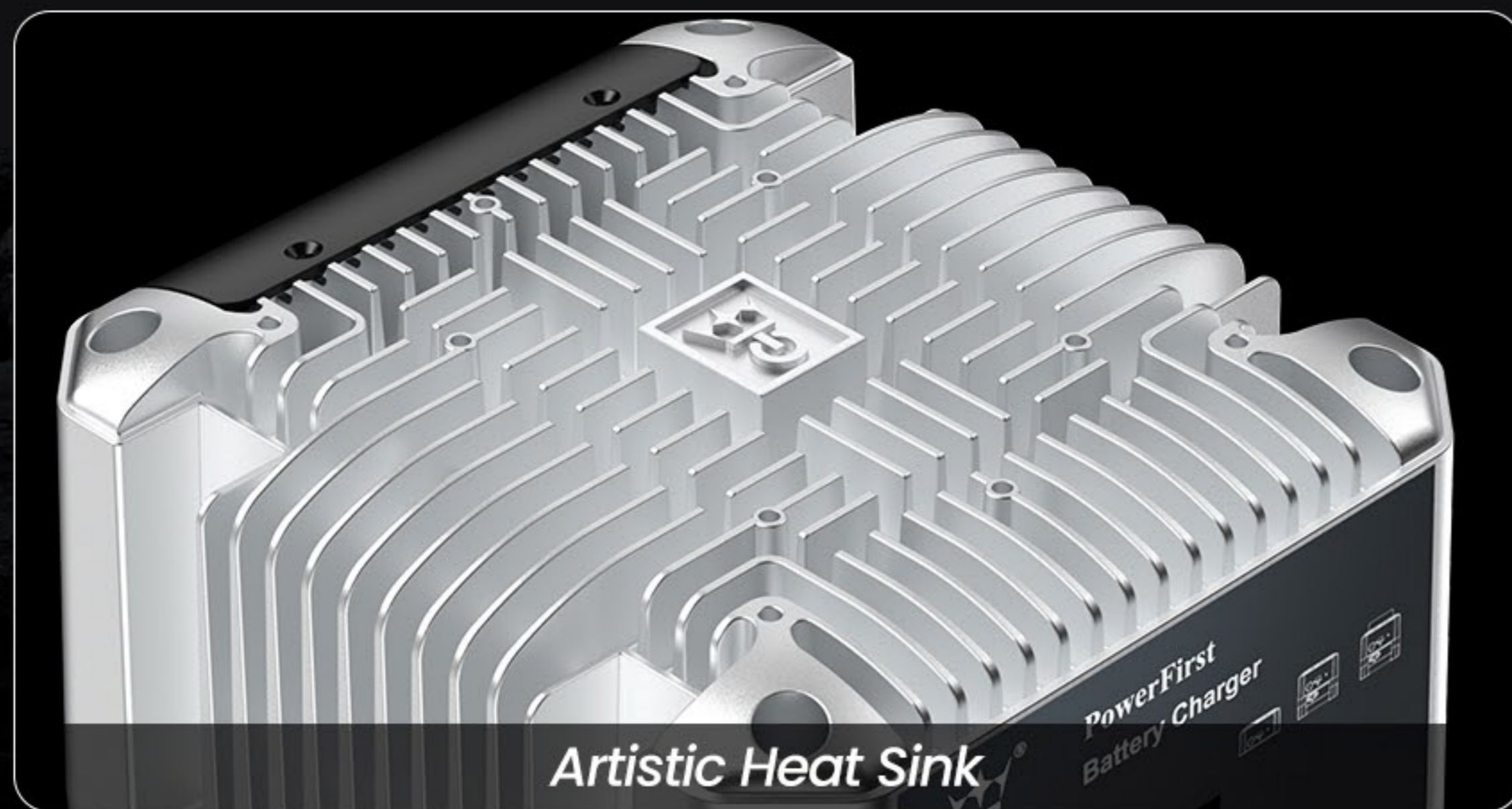
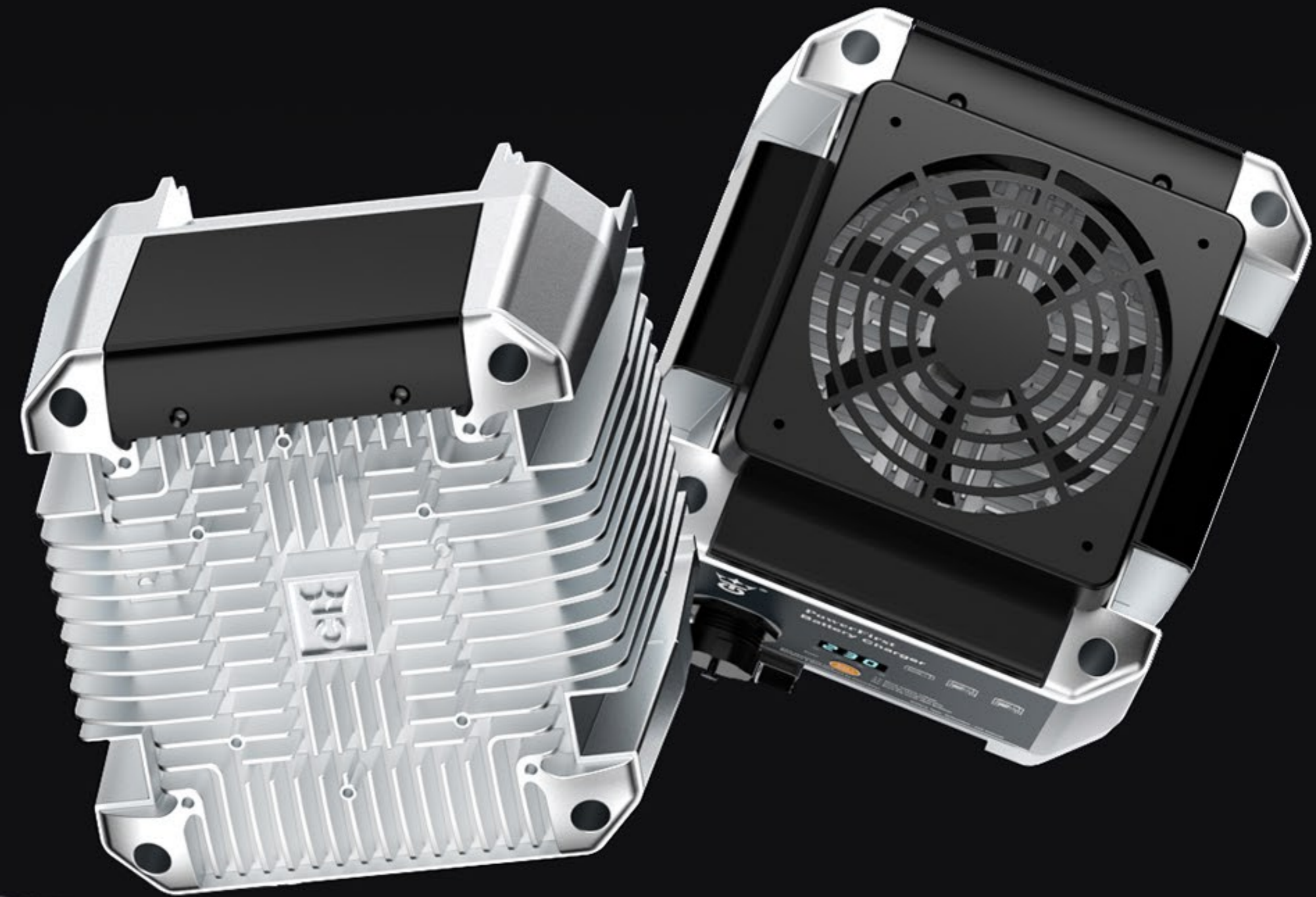
The EQ Family Charger is a sealed series of high-frequency battery charger with wide-range AC input adapting to any single-phase grid worldwide with a peak efficiency of 94%, complying with CEC. This charger features robust programmability, accommodating the flexible charging of various battery types, which make it suitable for a wide range of applications. Its outstanding safety performance ensures a high level of security for both users and the charger itself.



## Harmony of Space: Perfect Fusion of Aesthetics and Practicality

Inspired by a blend of intersecting forms and minimalist principles, the heat dissipation elements of EQ Family Charger are creatively arranged, which infuse a distinctive aesthetic. Tailored for elevated tasks, it cleverly adopts a square design seamlessly integrating the charger with machinery. Suitable to the reserved square space on aerial platforms, it provides users with enhanced convenience.

EQ Family Charger transcends beyond being a mere charger; it epitomizes the perfect fusion of craftsmanship and functionality, crafting an unparalleled experience that marries aesthetics with utility.



## Innovative Function : Pioneering the Future of Charging Experiences

The EQ Family Charger not only intelligently charge various batteries but also facilitate data upload and download through the USB port, meeting the data interaction needs of high-altitude work platforms.

Users can analyze the correctness of charging behavior through data and open data ports for personalized customization. Our in-house developed USB interface application software, based on the Windows OS, provides detailed analysis of charging habits, enabling personalized matching of charging curves. Additionally, the EQ Family Charger boasts a unique waterproof terminal design, ensuring outstanding water resistance and delivering immense convenience to users.





IP66

## All-Around Protection: Secure Charging

The EQ Family Charger is designed specifically for demanding outdoor environments such as construction sites. Encased in an IP66 protection-rated shell, it ensures comprehensive waterproof, dustproof, and shockproof features, guaranteeing reliable operation in harsh conditions. Adding an extra layer of safety for both workers and the charger, it includes a 380V high-voltage protection, eliminating the risk of accidentally plugging into a 380V power outlet. Thoughtfully concealed heat dissipation elements and rounded edges prioritize user safety, delivering a more secure and dependable charging solution for outdoor work.

● *Dustproof and Shockproof*

● *380V High Voltage Protection*



## Sustainable Materials & Superior Quality

EQ Family Charger features an aluminum shell and internal electronic components, meeting CEC energy efficiency standards. These materials not only ensure product texture and durability but are also easily recyclable, demonstrating a commitment to sustainable development.



**CEC**  
中国电子

China Electronics  
Corporation



Recyclable



Environment-Friendly  
Materials